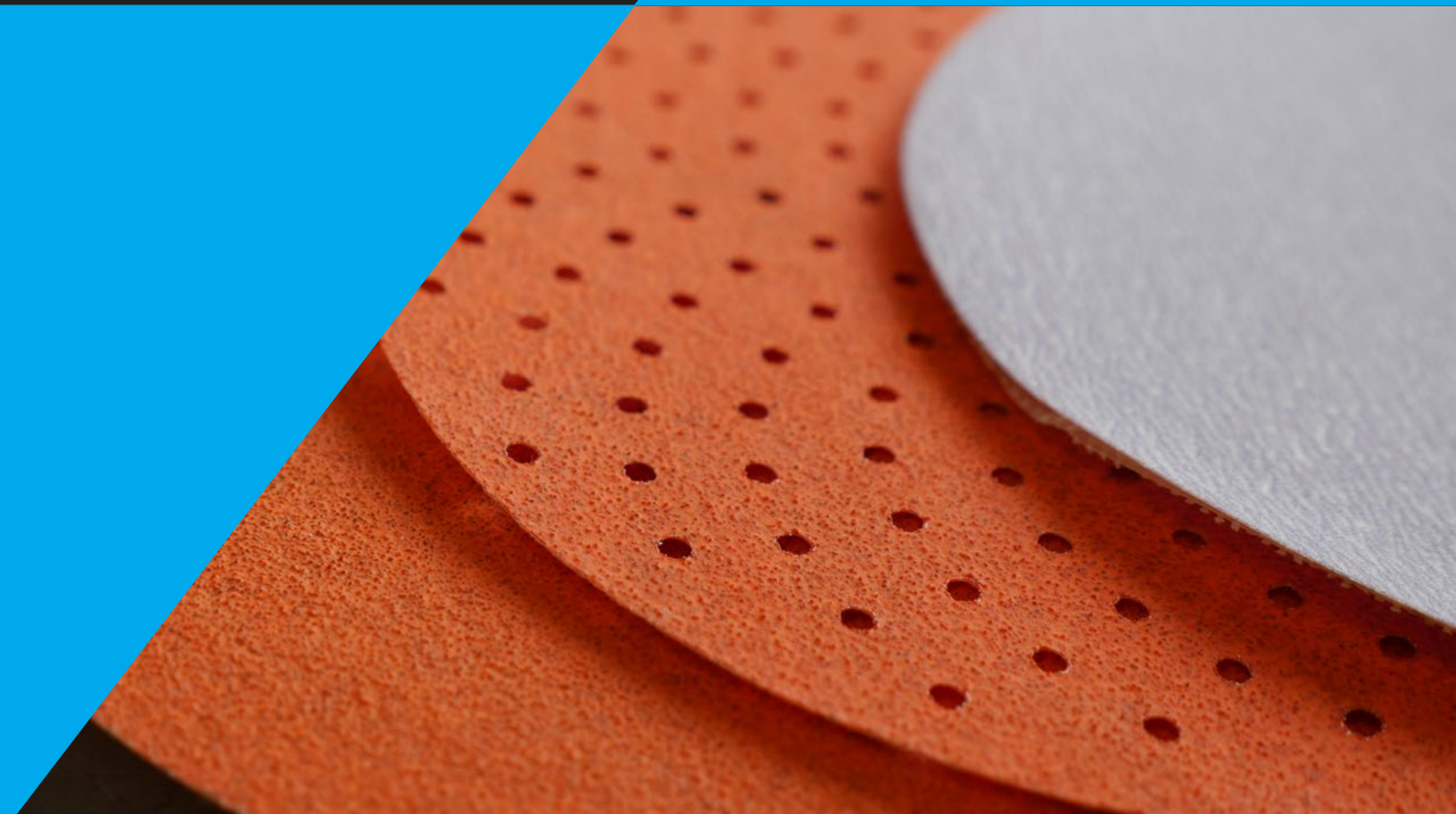




ABRASIVE BACKINGS

BALANCED FEATURES FOR OUTSTANDING RESULTS

- Products and Applications
- Performance Based Attributes
- Security of Supply
- Sales and Marketing





INDAFOR has over 60 years of experience in the manufacturing of latex-saturated and coated papers used in abrasive backings products worldwide.

Indafor has an established track record for consistent quality and performance; these saturated and coated paper products have gained worldwide acceptance as the preferred choice for premium waterproof and dry sanding applications.

With manufacturing facilities in Munising, Michigan, Bruckmühl, Bavaria in Germany, and Brownville, New York in the United States, Indafor abrasive backings encompass over 180 different products designed to offer performance and value in a variety of end-use applications, including wet sanding, dry sanding, sheets, disks, belts, and other products in various basis weights.

Recognizing that not all customers' needs or performance requirements are the same, Indafor offers custom design support to match the performance of the backing with the raw material or processing needs of individual customers. Whether the application requires modifications of basis weights, coatings, or colors, our abrasive backings will be tailor-made for the customer and application.

Indafor's commitment to the abrasives industry is supported by a complete staff of technical, sales, marketing, and customer service professionals dedicated to servicing coated abrasive manufacturers, worldwide. Indafor's research and development efforts focus on improving the value and capabilities of next-generation abrasive backings. This dedication and commitment have helped Indafor establish and maintain a leadership position as a premier manufacturer of backings for coated abrasives.



PERFORMANCE ATTRIBUTES:

	GOOD	BETTER	BEST
Fine Grit Wet Sanding			◆
Dry Sanding			◆
Discs	◆		
Hand Sanding			◆
Flexibility			◆
Durability		◆	
Lack of Curl			◆
Smoothness			◆

INDAFOR paint and polish wet sanding materials

Indafor Waterproof Backing Systems are designed for traditional wet sanding applications such as automotive repair, general metal sanding and oil sanding of wood. All backings are engineered to provide flexibility, durability, toughness, and smoothness. This unique balance of properties helps ensure that the backing life exceeds that of the customer-applied grit, even after prolonged periods of immersion in water.

Indafor Paint and Polish Wet Sanding Materials are backings with extreme smoothness, allowing for the application of the finest grits for paint and polishing when hand sanding. These backings are

saturated with nitrile butadiene rubber systems for a cloth-like feel. The backsize coating provides a premium level of grip while wet, as well as providing an excellent surface for printing.



Backsize Coat Closeup

Note: These backings are made in custom colors including contrasting barrier coats that are different than the color of the paper.

110 gsm NBR Saturated	
Backsize	Yes
Basis Weight (gsm)	111.7
Caliper (mm)	0.15
Tensile Ratio	1.6
MD Tensile (kg/15mm)	8.1
CD Tensile (kg/15mm)	5.1
MD Stretch (%)	4.6
MD Aged Wet Tensile (kg/15mm)	3.3
Elmendorf Tear MD (g/16 sheets)	86
Elmendorf Tear CD (g/16 sheets)	90
Smoothness (Sheffield)	95

SECURITY OF SUPPLY

Available from Munising, Michigan, USA.



PERFORMANCE ATTRIBUTES

	GOOD	BETTER	BEST
Fine Grit Wet Sanding		◆	
Dry Sanding			◆
Discs			◆
Hand Sanding		◆	
Flexibility		◆	
Durability			◆
Lack of Curl		◇	❖
Smoothness			

◇ No Synthetic ❖ Synthetic Fibers

INDAFOR premium wet or dry sanding abrasive papers

Indafor Premium Abrasive Backings are designed for maximum performance no matter how end-users work, wet or dry. These papers are reinforced with the highest levels of polymer saturant as well as custom additives to optimize performance for a customer's application. This product line is extremely durable with very high levels of wet or dry delamination resistance.

Note: Synthetic fibers can also be added to these premium backings to provide additional tear strength and resistance to curl.

Premium Backings can be tailor-made to have the best balance of properties for end-use products where the abrasives manufacturer knows the end customer might use the product for wet or dry sanding. These backings are available in basis weights from 80 - 150 gsm allowing for premium sanding from delicate hand sanding to aggressive power sanding discs and belts.

Note: This product line can be made in custom colors to match the branding requirements of customers.

	2079PO	7394PO	7371PO
Backsize	No	No	No
Basis Weight (gsm)	100	120	148
Caliper (mm)	.14	.16	.20
Tensile	1.4	1.4	1.3
MD Tensile (kg/15mm)	11	13.3	14
CD Tensile (kg/15mm)	7.7	9	11
MD Stretch (%)	3.7	3.3	3
MD Aged Wet Tensile (kg/15mm)	5	5.3	6
Elmendorf Tear MD (g/16 sheets)	90	125	150
Elmendorf Tear CD (g/16 sheets)	95	125	150
Smoothness (Sheffield)	85	125	200

SECURITY OF SUPPLY

Available from Munising, Michigan, USA, and Bruckmühl, Bavaria, Germany.



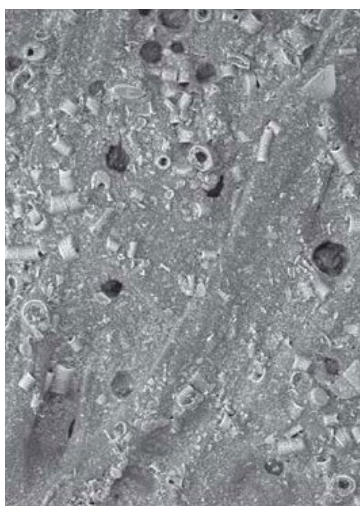
PERFORMANCE ATTRIBUTES

	GOOD	BETTER	BEST
Fine Grit Wet Sanding		◆	
Dry Sanding	◆		
Discs	◆		
Hand Sanding		◆	
Flexibility		◆	
Durability		◆	
Lack of Curl		◆	
Smoothness		◆	

INDAFOR premium wet sanding abrasive paper

Indafor Wet Sanding Abrasive Backings are available in basis weights from 80 - 150 gsm and have specially designed barrier coatings for superior holdout and adhesion to make and size coatings. Barrier coatings can be formulated to be compatible with water or solvent-based make coatings. And because many make and size coatings involve highly complex chemistries, custom barrier coating formulations can be designed to enhance the barrier coating interaction with your systems.

Note: Like all Indafor backings, this product line can be made in custom colors to match the branding requirements of customers.



Backsize Coat Closeup

Backsize Coatings enhance the functional performance of the finished coated abrasive. These specialty coatings provide added curl resistance, increased water resistance and improved grip during hand sanding applications.

	0244PO	AE 115 / BA / 802089 BREW	CE 145 / BA / 802079 BLU
Backsize	No	Yes	Yes
Basis Weight (gsm)	100	115	145
Caliper (mm)	.14	.14	.17
Tensile Ratio	1.4	1.6	1.8
MD Tensile (kg/15mm)	9.6	12.2	22.1
CD Tensile (kg/15mm)	7.0	7.7	12.5
MD Stretch (%)	2.7	2.8	3.1
MD Aged Wet Tensile (kg/15mm)	4.3	4.7	6.5
Elmendorf Tear MD (g/16 sheets)	85	90	112
Elmendorf Tear CD (g/16 sheets)	90	90	130
Smoothness (Sheffield)	100	289	163

SECURITY OF SUPPLY

Available from Munising, Michigan, USA, and Bruckmühl, Bavaria, Germany.

INDAFOR abrasive backings for dry finishing applications

Our abrasive backings provide the right balance of strength, flexibility, and tear resistance needed for tough jobs, including wood, automotive, marine, furniture and metal sanding. Unlike many conventional kraft papers found at retail stores, Indafor Dry Finishing Abrasive Backings are latex saturated and coated for excellent flexibility, durability, surface receptivity, and end-product performance.



Sanding Paper Closeup

Note: Available products in this line are specifically made for delicate hand sanding as for woodworking or musical instrument manufacturing and repair.

PERFORMANCE ATTRIBUTES

	GOOD	BETTER	BEST
Fine Grit Wet Sanding	◆		
Dry Sanding		◆	
Discs		◆	
Hand Sanding		◆	
Flexibility	◆		
Durability		◆	
Lack of Curl		◆	
Smoothness		◆	

INDAFOR dry finishing papers

These finishing papers also contain barrier coatings designed for use with common water-based make coatings, such as animal-hide glue. These tough barrier coatings help improve grain adhesion and maintain full flexibility of the base by preventing make coat penetration, which can cause brittleness. Barrier coatings can also help improve the adhesion and resistance to penetration of non-glue make coat systems, such as the UF, PF, and epoxy-based systems used in dry finishing applications.



While backsize coatings are often for waterproof papers, these coatings can also be applied to the lightweight dry sanding product line to provide benefits. A backsize, like synthetic fiber, will help with dynamic stability and reduce curl in the process and final product. Backsize coatings can also be modified to maximize "dry grip" for hand sanding applications.

As many lightweight dry sanding grades are used for PSA or loop-laminated discs, a backsize layer can act as a barrier to the PSA or glue used to apply the loop. This backsize coating may generate savings because more PSA or glue stays on the surface rather than soaking into the backing.

	FF 100 / B / 802054 YLW	0665PO	FF 150 / BA / 311471 BRW
Backsize	No	No	Yes
Basis Weight (gsm)	100	125	150
Caliper (mm)	.11	.17	.17
Tensile Ratio	1.6	1.4	1.5
MD Tensile (kg/15mm)	16.2	13.5	17.5
CD Tensile (kg/15mm)	10.2	9.4	11.7
MD Stretch (%)	2.9	2.8	3.1
MD Aged Wet Tensile (kg/15mm)	NA	NA	NA
Elmendorf Tear MD (g/16 sheets)	81	135	127
Elmendorf Tear CD (g/16 sheets)	77	140	132
Smoothness (Sheffield)	118	160	314

SECURITY OF SUPPLY

Available from Munising, Michigan, USA, and Bruckmühl, Bavaria, Germany.

Note: Like all Indafor backings, the lightweight dry finishing backings can be made in custom colors to match the branding requirements of customers.



PERFORMANCE ATTRIBUTES

	GOOD	BETTER	BEST	VERY BEST
Fine Grit Wet Sanding	◆	◆	◆	◆
Dry Sanding				◆
Discs				◆
Hand Sanding	◆	◆	◆	◆
Flexibility	◆			
Durability				◆
Lack of Curl				◆
Smoothness	◆			

◆ Not Recommended

110 gsm NBR Saturated	7472P0
Backsize	Yes
Basis Weight (gsm)	150
Caliper (mm)	.19
Tensile Ratio	1.2
MD Tensile (kg/15mm)	51
CD Tensile (kg/15mm)	41
MD Stretch (%)	4.2
MD Aged Wet Tensile (kg/15mm)	NA
Elmendorf Tear MD (g/16 sheets)	240
Elmendorf Tear CD (g/16 sheets)	250
Smoothness (Sheffield)	240

DuraFlat® fibre abrasive sanding

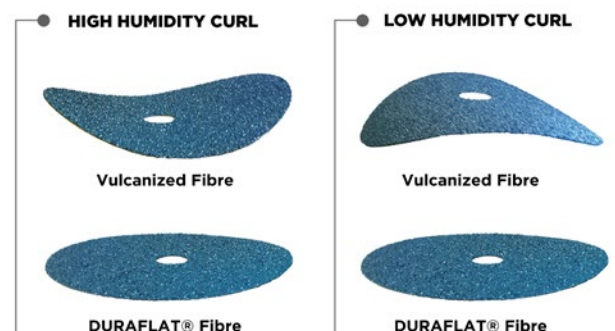
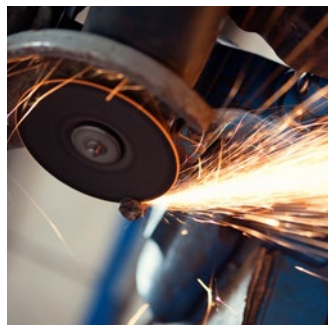
DuraFlat® Fibre is a wet-laid combination of synthetic fiber, cellulose fiber, and reinforcing rubber saturants to form an ultra-durable substrate for the most aggressive grinding applications.

This material is intended for very special applications where normal paper, cloth, or film materials would break down due to the high forces and temperatures created by the grit against the surface.

Typical applications include material removal, as in paint from metal surfaces, paint, or stain from wood floors, or renewing wood by completely removing the top layer.

DuraFlat® Fibre is an excellent tool for premium sanding discs and belts.

Note: DuraFlat® Fibre can be tailor-made to customer needs including colors, coatings, basis weights, etc.



SECURITY OF SUPPLY

Available from Munising, Michigan and Brownville, New York, USA



PERFORMANCE ATTRIBUTES

		GOOD	BETTER	BEST
With Synthetic Fibers	Fine Grit Wet Sanding	◆		
	Dry Sanding	◆		
	Discs		◆	
	Hand Sanding	◆		
	Flexibility	◆		
	Durability		◆	
	Lack of Curl		◆	
	Smoothness	◆		
Without Synthetic Fibers	Fine Grit Wet Sanding	◆		
	Dry Sanding	◆		
	Discs	◆		
	Hand Sanding	◆		
	Flexibility	◆		
	Durability	◆		
	Lack of Curl	◆		
	Smoothness		◆	

MultiTask wet or dry abrasive backings

Multitask Abrasives Backings are products that have been designed to do wet or dry sanding in value applications. MultiTask products are intended for that would like to upgrade from kraft or oil-bond papers.

These products are available with or without reinforcing synthetic fibers. This version with synthetic fibers has improved the tear strength for use in power tools and sanding blocks.



Available With Reinforcing Synthetic Fibers

Note: Like all Indafor backings, this product line can be made in custom colors to match the branding requirements of customers.

SECURITY OF SUPPLY

Available from Munising, Michigan, USA.

	7557PO	5702PO	WD 120 / B / 802074 YLW
Backsize	No	no	Yes
Basis Weight (gsm)	110	110	120
Caliper (mm)	.15	.14	.14
Tensile Ratio	1.7	1.3	1.8
MD Tensile (kg/15mm)	13.5	13	20.3
CD Tensile (kg/15mm)	8.0	9.8	11
MD Stretch (%)	3.2	2.5	3.3
MD Aged Wet Tensile (kg/15mm)	4	4	6.2
Elmendorf Tear MD (g/16 sheets)	120	115	102
Elmendorf Tear CD (g/16 sheets)	135	110	119
Smoothness (Sheffield)	150	125	242



For supplemental information and additional details:

[indafor.com/solutions/coated-abrasive-backings](https://www.indafor.com/solutions/coated-abrasive-backings)

North America: 800.344.5287

Outside North America: 906.387.2700

[indafor.com/contact-us](https://www.indafor.com/contact-us)

For supplemental information and additional details visit www.indafor.com

© 2024 Indafor. All rights reserved. ® and TM indicate registered and unregistered trademarks owned by Indafor.
Photography and imagery shown are for illustration purposes only. ISO 9001: 2015 Registered Quality Management System

02/24

